

# HIGH CARD FLUSH

## RULES OF PLAY

## DEALING PROCEDURES

High Card Flush is a house-banked card game played with a standard 52-card deck of playing cards. There are multiple variations of the game, but the basic rules are as follows. The game is played in a single hand. The dealer deals five cards to each player and five cards to the dealer's hand. The player's hand is ranked according to the player's cards, and the dealer's hand is ranked according to the dealer's cards. The player's hand is compared to the dealer's hand to determine the winner. The player's hand is ranked according to the number of cards of the same suit (a "flush") that the player has. The dealer's hand is ranked according to the number of cards of the same suit (a "flush") that the dealer has. The player's hand is compared to the dealer's hand to determine the winner. The player's hand is ranked according to the number of cards of the same suit (a "flush") that the player has. The dealer's hand is ranked according to the number of cards of the same suit (a "flush") that the dealer has. The player's hand is compared to the dealer's hand to determine the winner.

After examining their cards, each player must either fold their hand and surrender their Ante wager or place a Raise wager. The Raise wager amount must be equal to the Ante wager amount unless the Player's hand consists of five or more cards of the same suit. In that instance, a player with five suited cards may increase their Raise wager up to double their Ante wager and a player with more than five suited cards (6 or 7) may increase their Raise wager up to triple their Ante wager.

Once all the players have acted on their hand, the dealer's cards are exposed. If the dealer's hand does not meet or exceed a predetermined qualifying hand of a three card long 9-high flush, all remaining players will receive an even-money payment equal to their Ante wager and their Raise wager results in a push.

If the dealer's hand does meet or exceed a predetermined minimum qualifying hand of a three card long 9-high flush, the Dealer's hand is compared to each player's hand, and:

- a. If the Player's hand ranks higher than the Dealer's hand, the Ante and Raise wagers win and are paid even-money.
- b. If the Player's hand ranks lower than the Dealer's hand, the Ante and Raise wagers lose and are collected.

## HOW TO PLAY

High Card Flush is a house-banked card game played with a standard 52-card deck of playing cards. There are multiple wagers that may be made by a player. Ranking of hands are based upon the number of cards of the same suit (a flush) in the player's or dealer's hand. The Ante and Raise wagers (described below) correspond to the player's hand versus the dealer's hand. Other wagers are based upon comparing the player's hand to a predetermined payable. These wagers remain in action even if the player folds during play and forfeits their Ante and Raise wagers.

Casino operators choose which wagers they will offer and the minimum and maximum wagering limits, subject to the limitations and definitions in the appropriate gaming regulatory agency, or as contained within these Rules of Play.

### ANTE / RAISE WAGER

1. Each player plays against the Dealer. Players place an Ante wager and receive seven cards face-down. The initial position may be selected by a dice shaker, an electronic RNG, or by simply dealing to the first position (to the dealer's immediate left) and continuing clockwise. The dealer also receives seven cards face-down. The object is to have more cards of the same suit (a "flush") than the dealer, regardless of suit. In the event both the Dealer and the Player have the same number of cards in their flush, the winning hand is determined by the highest ranking card (Ace – 2) of the flush in each hand. If the highest ranking card is the same in both hands, the second highest card is the determining factor. If the highest and second highest ranking cards are the same in both hands, the third highest card is the determining factor and so on. This same rule follows until a winner or a tie is determined. If both the number of cards and values are identical (players and dealers) the Ante and Raise are a push or tie. Successive cards of the same suit (a "straight flush") has no significance (as it does in standard poker or in the Straight Flush wager). An Ace is the highest valued card.
2. After examining their cards, each player must either fold their hand and surrender their Ante wager or place a Raise wager. The Raise wager amount must be equal to the Ante wager amount unless the Player's hand consists of five or more cards of the same suit. In that instance, a player with five suited cards may increase their Raise wager up to double their Ante wager and a player with more than five suited cards (6 or 7) may increase their Raise wager up to triple their Ante wager.
3. Once all the players have acted on their hand, the dealer's cards are exposed. If the dealer's hand does not meet or exceed a predetermined qualifying hand of a three card long 9-high flush, all remaining players will receive an even-money payment equal to their Ante wager and their Raise wager results in a push.
4. If the dealer's hand does meet or exceed a predetermined minimum qualifying hand of a three card long 9-high flush, the Dealer's hand is compared to each player's hand, and:
  - a. If the Player's hand ranks higher than the Dealer's hand, the Ante and Raise wagers win and are paid even-money.
  - b. If the Player's hand ranks lower than the Dealer's hand, the Ante and Raise wagers lose and are collected.

- c. If the Player's and Dealer's hands tie, the Ante and Raise wagers push.

#### PROCEDURAL SITUATION RECOMMENDATIONS

1. **Playing two Hands** – Allowing players to play more than one hand is decided by the casino.
2. **Folding a Straight Flush hand** – A player's hand may contain a low straight flush, example – 5, 4, 3 of Hearts. This is not a good High Card Flush hand, however if the player made the Straight Flush propositional wager as it is a winning hand on the straight flush bonus. If the player chooses to 'Fold' the player should turn the Straight Flush cards face up on top of the 4 remaining cards and place all 7 cards in the discard area. Face up indicates to the dealer there is a winning combination. The dealer should fan the cards, verify the winning event, pay the player and place all 7 cards in the discard holder. This should be completed before picking up the discards of players who are remaining in the hand.
3. **Discarding a Straight Flush hand** – In the event a player wishes to discard a winning Straight Flush hand, example – Player's hand contains Ace, Jack, 9, 7 of Spades, and the 6, 7 8 of Diamonds. The best High Card Flush hand is the 4 card - Ace high, however the player has made the Straight Flush wager and has a 3-card Straight Flush. Player should place the 3-card Straight Flush face up in the discard area. Face up indicates to the dealer there is a winning combination. The dealer should fan the cards, verify the winning event, pay the player and remove both the wager and payout off the betting area, then place the discards face down in the discard area.
4. **Dealing to All Player Positions** – One option for delivering the cards is to deal a packet of 7-cards to all 6-player positions regardless if there is a wager or not. This enables players to move positions if they wish and receive a different packet of 7-cards.
5. **Dealing only to the Money** - Another option is to deliver a packet of 7-cards only to those positions where players have made a wager.
6. **Tokes** – Toking policies are up to each casino. However it is recommended that a player cannot make a "Raise" bet for the dealer unless the player made an "Ante" bet for them prior to the start of the hand. A player can wager 1, 2 or 3 times the "Ante" wager but is not required to do so.
7. **Calling the Hand** – Once the dealer has established their best High Card Flush hand, regardless if they qualify or not they should call their hand. Dealer should call the number of cards first and then the highest card. Example – The dealer best High Card Flush hand is a Queen, 9, 7 of Clubs. Dealer calls out 3 card, Queen high, all bets are in action.
8. **Players Playing Blind** – Players cannot play their hand(s) blind.



**FLUSH BONUS WAGER**

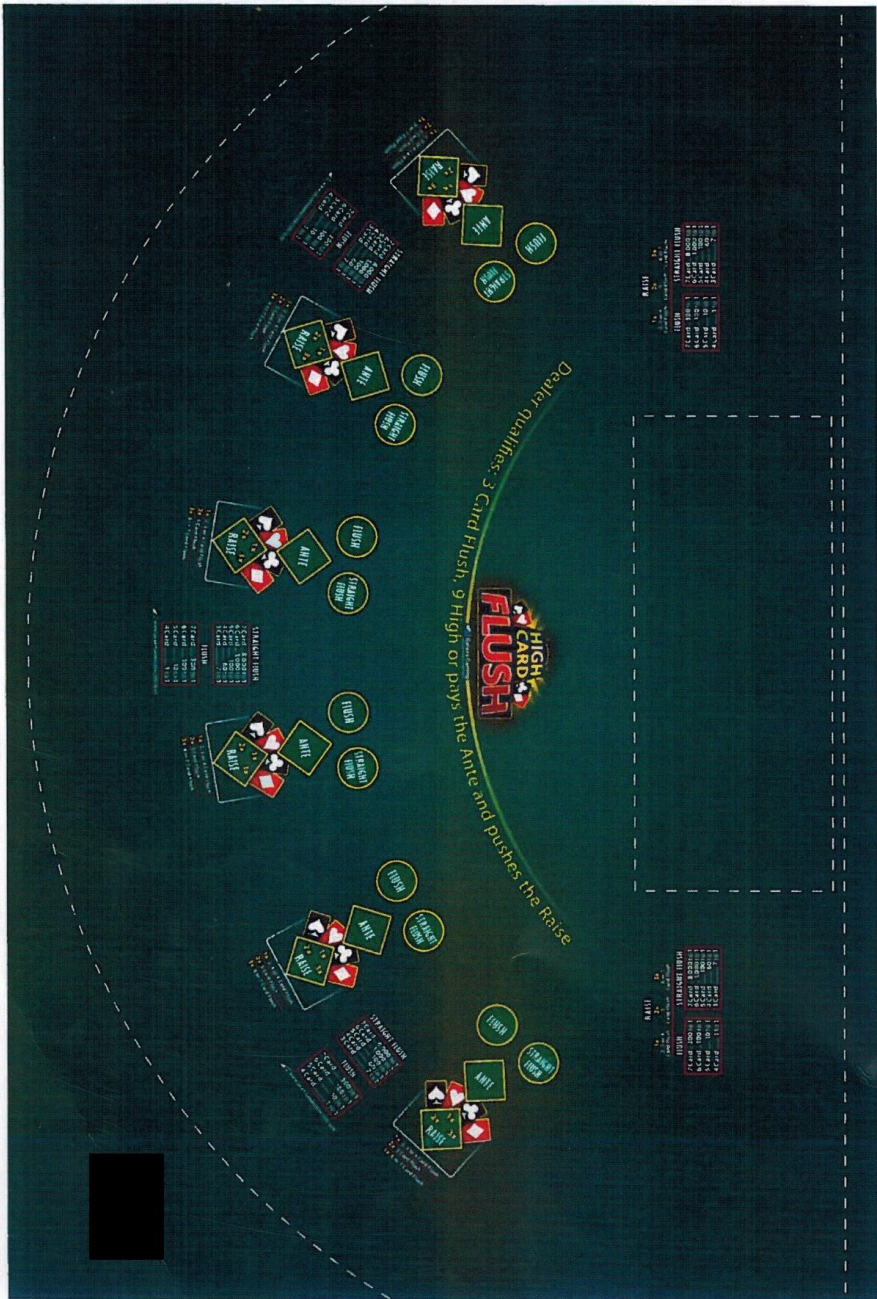
A player wins this wager and corresponding payout when their hand matches one of the "Flush" bonus hands printed on the High Card Flush layout. Players are eligible to win even if they folded their hand on the Ante / Raise wager.

**STRAIGHT FLUSH BONUS WAGER**

A player wins this wager and corresponding payout when their hand matches one of the "Straight Flush" bonus hands printed on the High Card Flush layout. Players are eligible to win even if they folded their hand on the Ante / Raise wager.

**BONUS JACKPOT WAGER**

A player wins this wager and the corresponding payout when their bet matches one of the "Bonus Jackpot" (often referred to as the progressive) hands posted on the Bonus Jackpot monitor attached to the High Card Flush table. Players must make the Bonus Jackpot wager prior to the cards being delivered to be eligible.



The material included in this PDF document constitutes a 'fair use' of any copyrighted material as provided for in Section 107 of the U.S. Copyright law which allows for education, teaching (including multiple copies for classroom use), scholarship, or research and is not deemed an infringement of copyright in the eyes of the law.

**§ 107 . Limitations on exclusive rights: Fair use<sup>40</sup>**

Notwithstanding the provisions of sections 106 and 106A, the fair use of a copyrighted work, including such use by reproduction in copies or phonorecords or by any other means specified by that section, for purposes such as criticism, comment, news reporting, teaching (including multiple copies for classroom use), scholarship, or research, is not an infringement of copyright. In determining whether the use made of a work in any particular case is a fair use the factors to be considered shall include—

- (1) the purpose and character of the use, including whether such use is of a commercial nature or is for nonprofit educational purposes;
- (2) the nature of the copyrighted work;
- (3) the amount and substantiality of the portion used in relation to the copyrighted work as a whole; and
- (4) the effect of the use upon the potential market for or value of the copyrighted work.

The fact that a work is unpublished shall not itself bar a finding of fair use if such finding is made upon consideration of all the above factors.